



Solar Light Project Case

2024 VERSION

1

Basalt

2

Atlas

3

Thermos



Basalt



Core Technology

Main Features(only we have)

1. The only street lamp on the market that uses explosion-proof glass as its body. It has an ultra-thin body like an iPhone, and the thickness of the lamp is 22m-76mm. (The appearance is highly recognizable, and the new technology brings customers more margin.)
2. FAS function to detect defect parts of LED,battery,PCBA and solar panel.making maintenace easy and fast. (Improve efficiency of solving customer complaint and reduce the rate of secondary customer complaints.)
3. Change LED board fast. without screws. Fast after sales .

Features(what we doing better than those on market)

1. Tempered glass lamp body, never rust and corrosion, more suitable for high humidity and high salt area such as island/ seaside
2. professional light distribution: Type 3 light distribution design,distance-to-height ratio (Max4.5:1) . Save cost and increase project profitability.

Core Technology

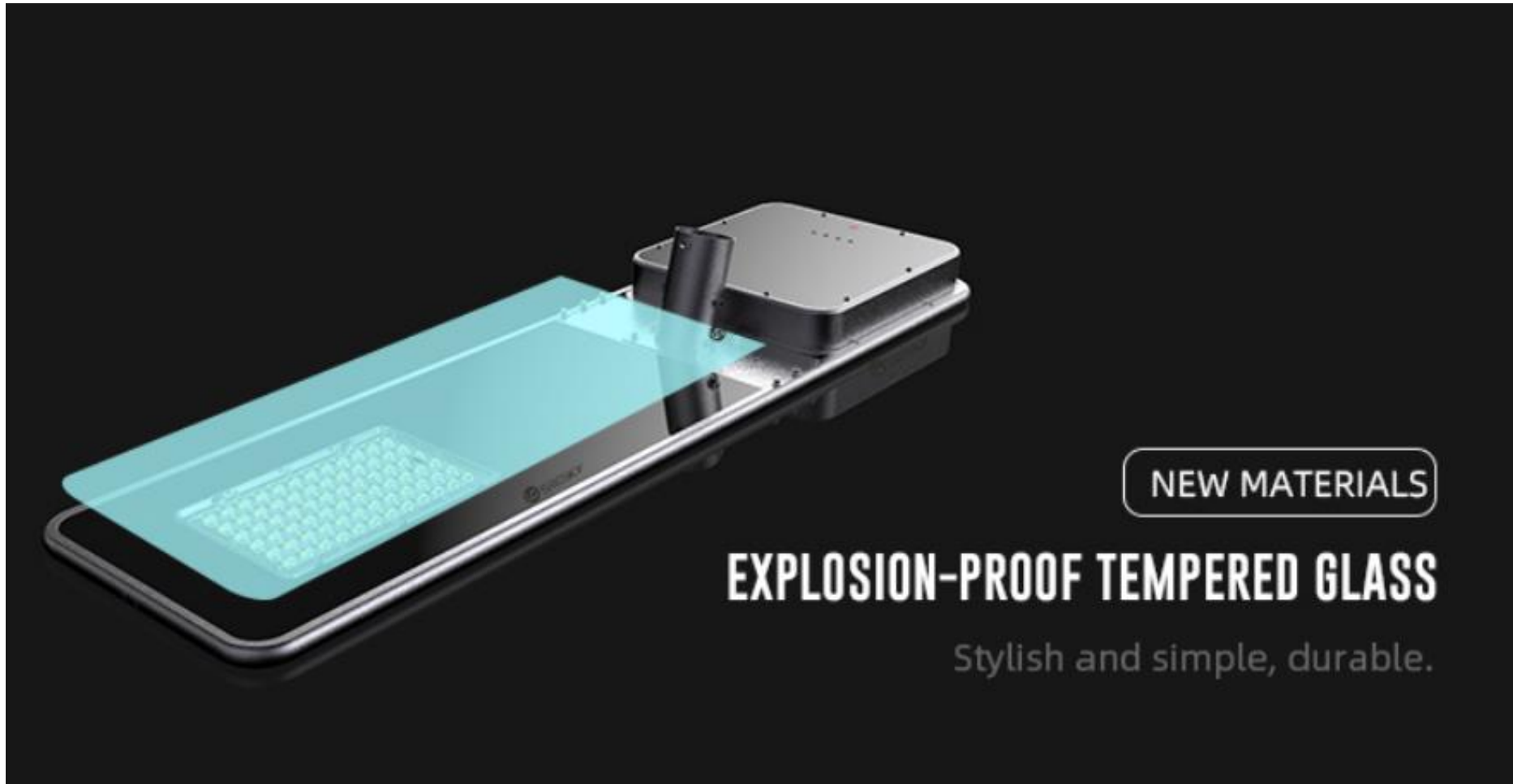
Super-slim design



Core Technology

Tempereted Glass lamp body

Better anti-rust performance in high humidity and high salt like sea side in Greece



NEW MATERIALS

EXPLOSION-PROOF TEMPERED GLASS

Stylish and simple, durable.

Core Technology

1.TCS(Temperature Control System):

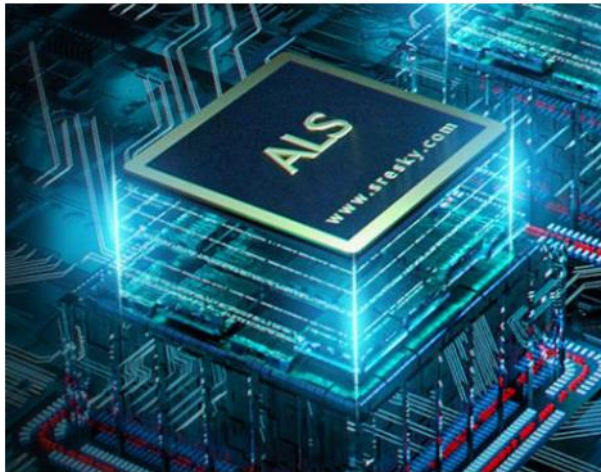
To protect lithium battery in Cold area from -20°C to high temperature up to 65°C

2.ALS(Adaptive Lighting System):

To prolong the lighting time when it's in cloudy/rain days can customize 70% whole night lighting

1. How to extend lighting time over 7 days?

A programmer we set in controller, when meet bad weather which lack of sun light, the system will do smart timely calculation for remaining battery capacity, and give max output efficiency for prolong lighting time to reach 7-10 cloudy days.



ADVANTAGE OF ALS



Core Technology

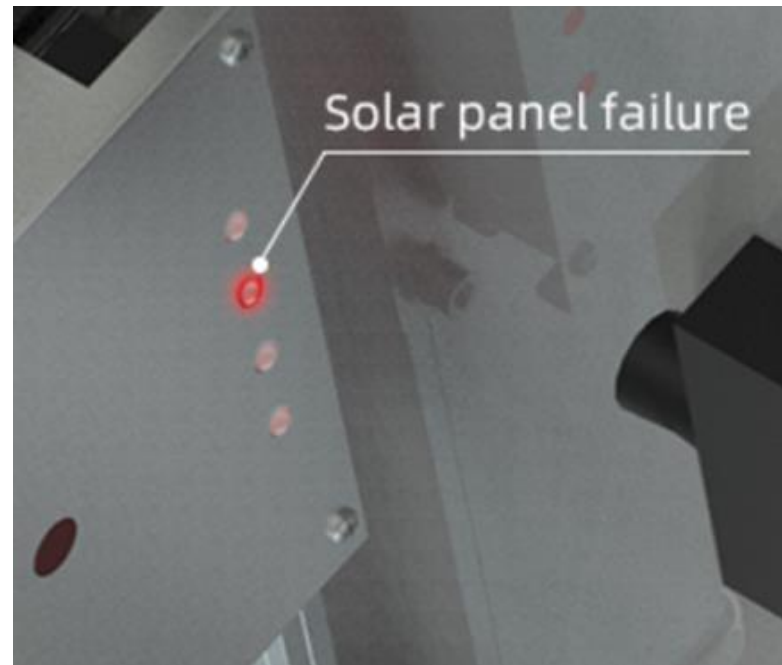
3.FAS--Fault Alarming System:

To prolong the lighting time when it's in cloudy/rain days can customize 70% whole night lighting

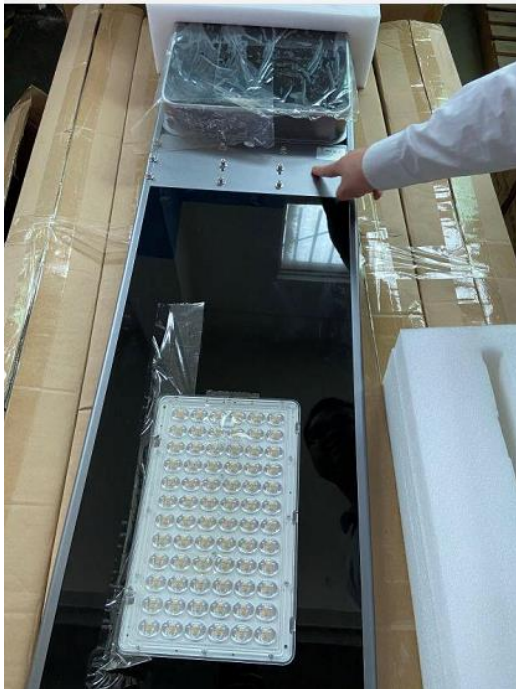
4 LED indicator correspond to 4 parts:

1. Battery (1st LED)
2. Solar Panel (2nd LED)
3. LED (Third LED)
4. LED Driver (Fourth LED)

once one of the 4 part has problem,the corresponding LED will flash fast to remind



Real Product photo



SSL-98H

French Project, 7M tall, 30M distance, Hybrid&Smart



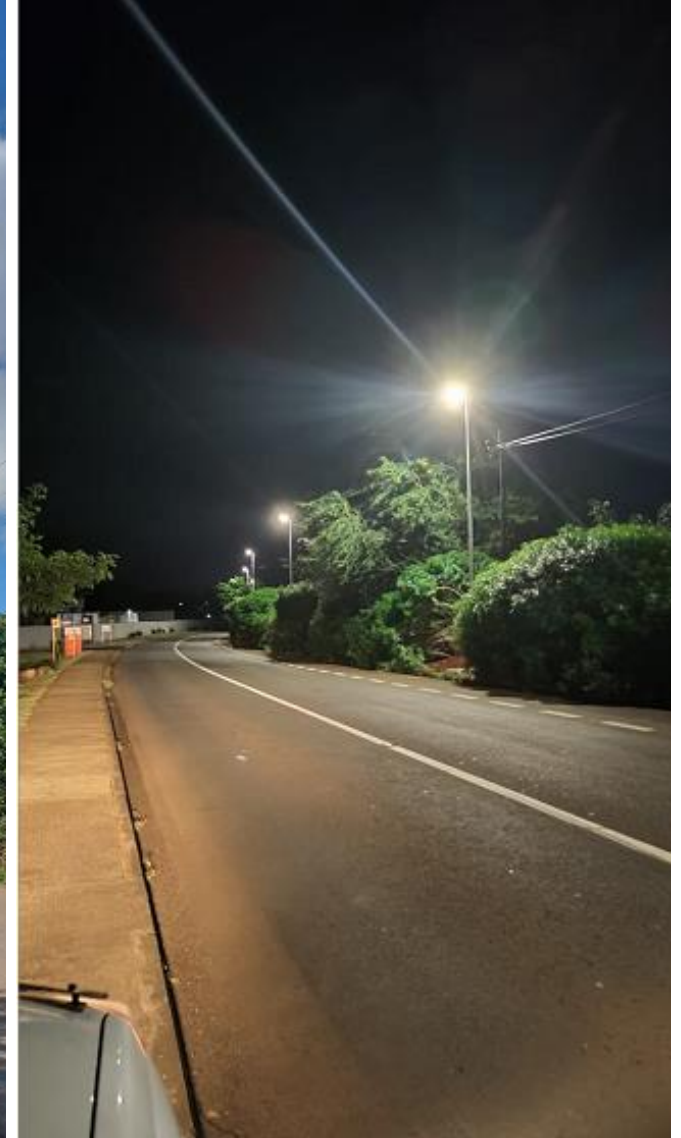
SSL-98H

French Project, 7M tall, 30M distance, Hybrid&Smart



SSL-98

Mauritius Project, 8M tall, 30M distance



SSL-96&98 Cyprus Project



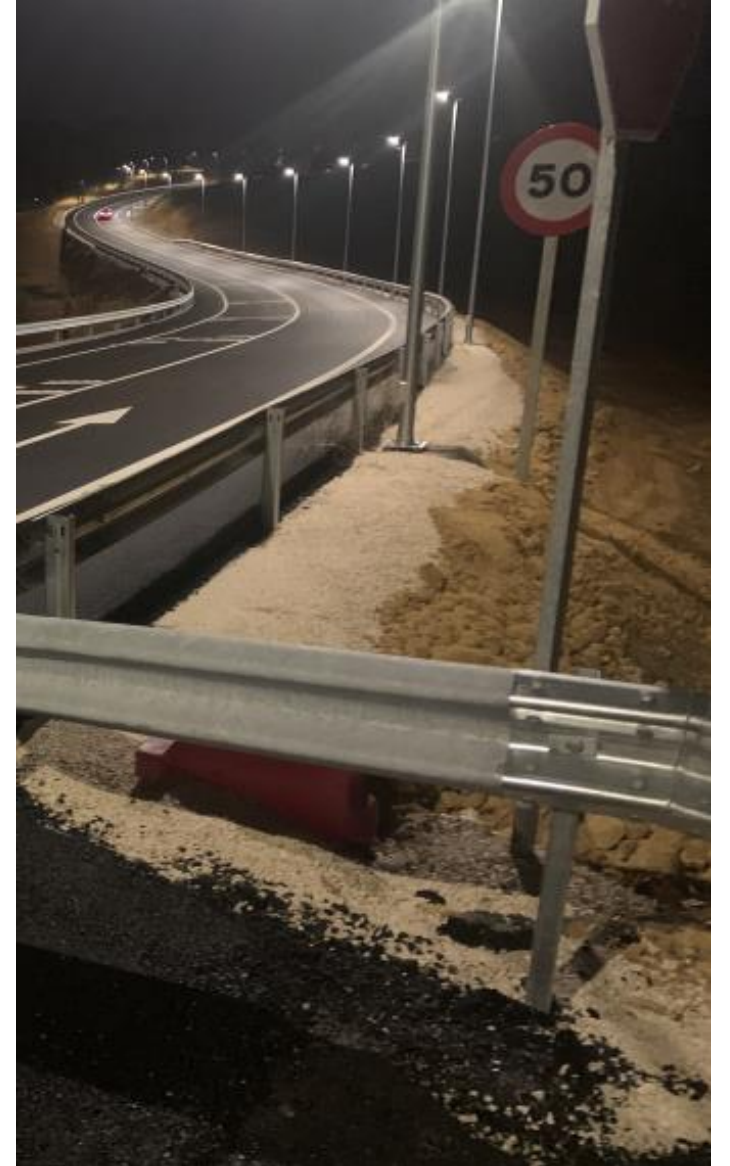
SSL-96 Cyprus Project



SSL-96 Cyprus Project



SSL-910 Spain Project



SSL-910 Spain Project



SSL-910 10M Colombia Project



SSL-910 10M Colombia Project



SSL-910 10M Colombia Project



SSL-94 Tonga Project





Atlas



Selling Point(only we have)

1. The Unique simple design; large LED panel for wider lighting area; external battery pack with good heat dissipation
2. ALS2.3 technological innovation, A programmer we set in controller, when meet bad weather which lack of sun light, the system will do smart timely calculation for remaining battery capacity, and give max output efficiency for prolong lighting time to reach over cloudy days. So can avoid customer complain in bad weather.

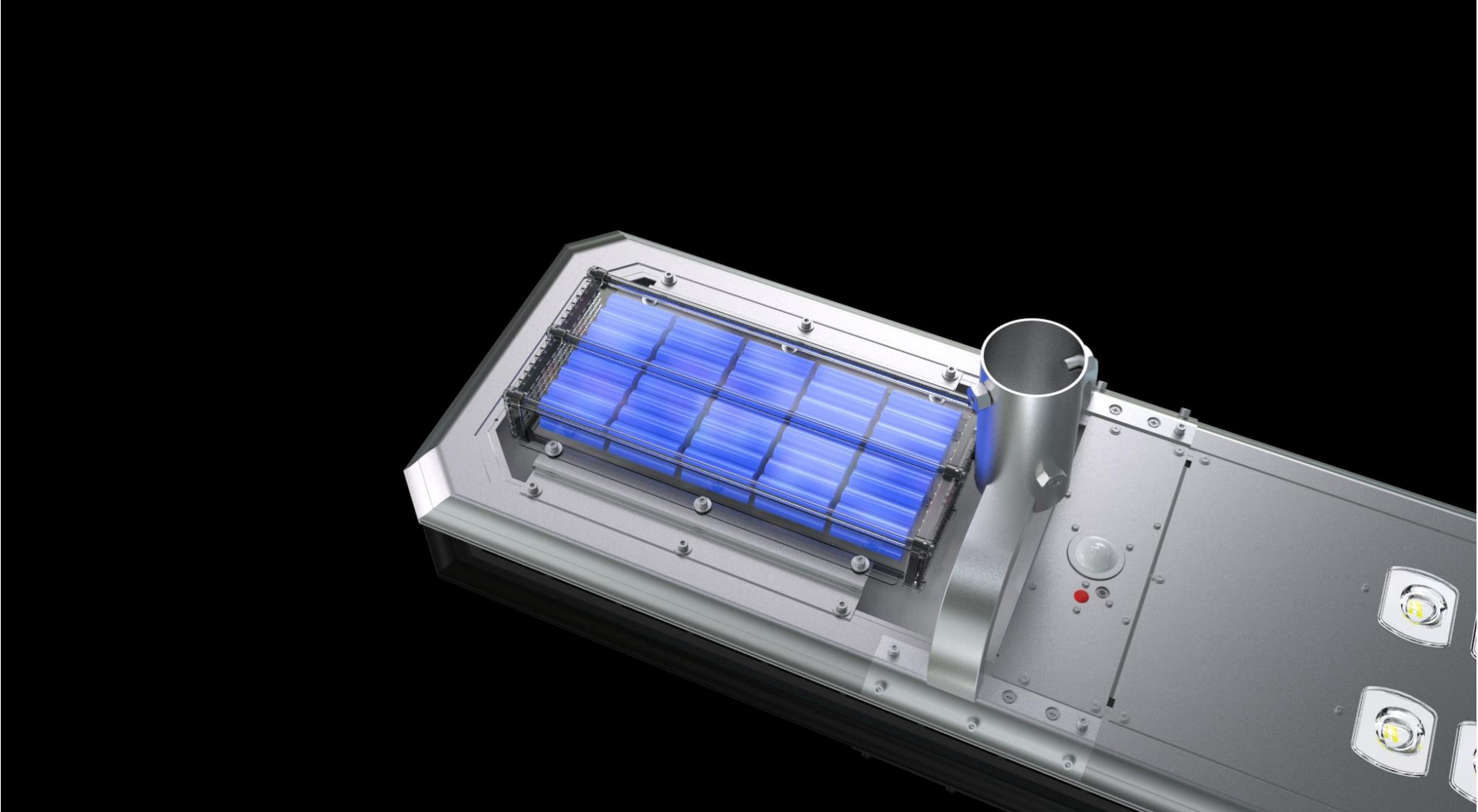
Features(what we doing better than those on market)

1. Independent modules of all important components are fully waterproof & anticorrosive
- 2.TCS technology to protect battery in high/low temperature -20-65°C,so can ensure battery long lifespan in winter and summer.

Wide Application: Streets, Road, Schools, Residential areas, Commercial areas, Hosptial, government Projects etc...

Lithium Power battery

1500 cycles lifespan, which mainly used in New energy Cars



Detachable Design

Battery pack, LED panel, Solar panel are all
separated

Suit for **high temperate**

Long life time

Easily replace in high sky

Low repair cost



3 types of lighting mode

M1: 30% brightness +PIR till dawn

M2: 5 hrs 100% brightness + 5 hrs PIR with 25% dim light + 70% brightness till dawn

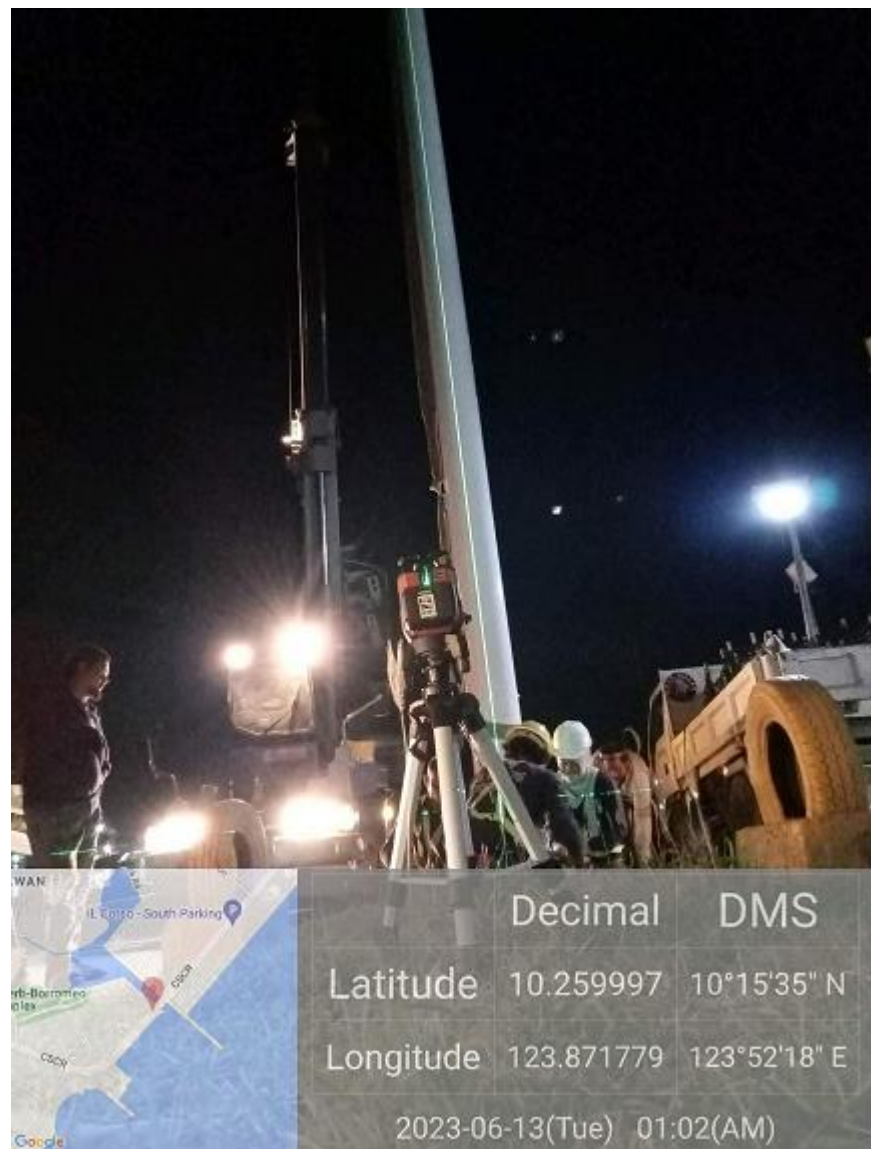
M3: 70% brightness till dawn



SSL-310M Bahamas Project



SSL-310M 12M Philippines Project



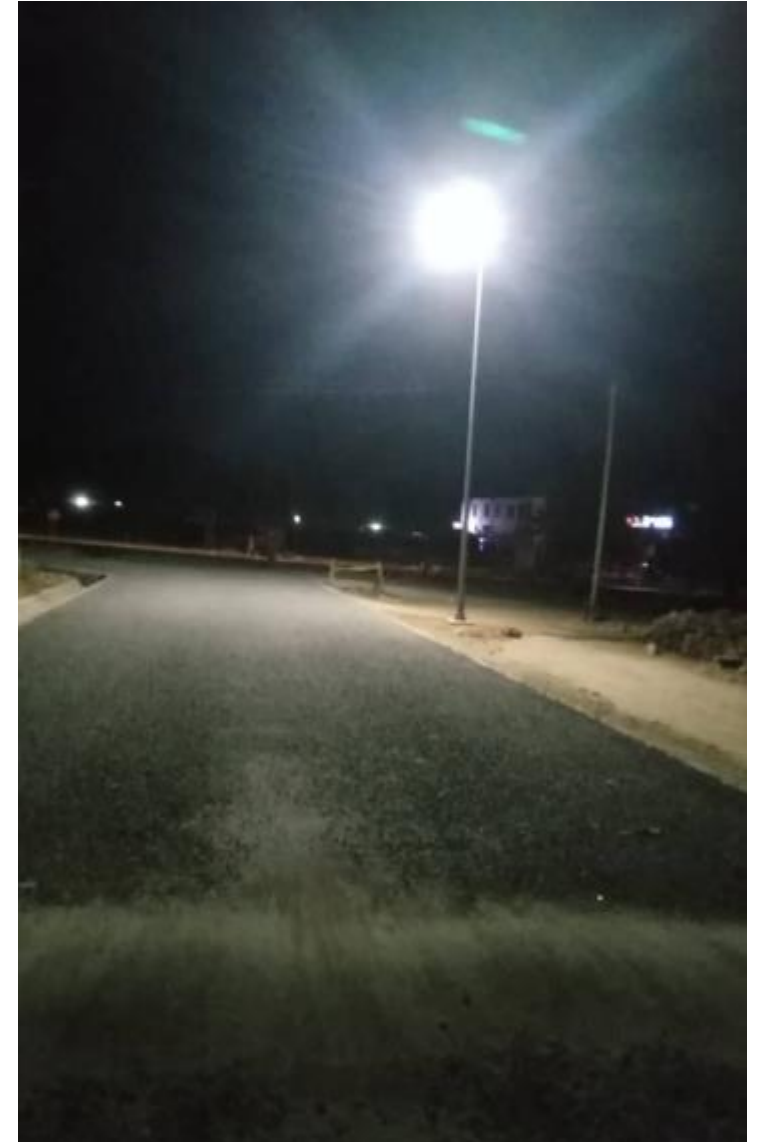
SSL-36M 6M Tall 30M Distance in Mauritius Project



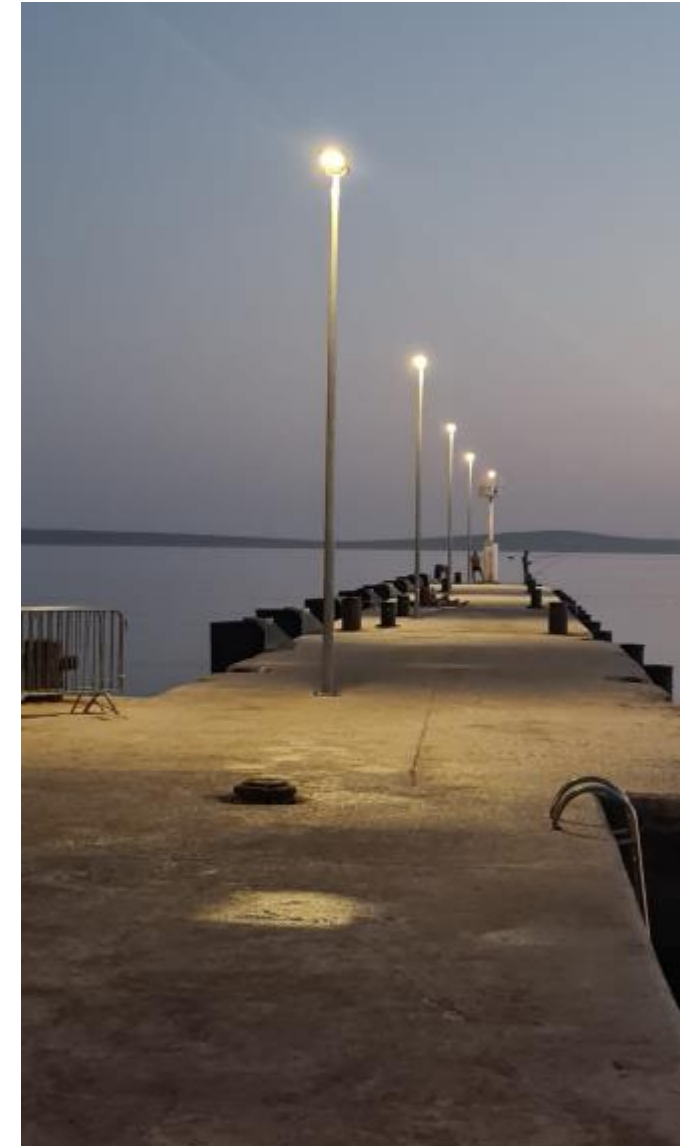
SSL-36M 6M Tall 30M Distance in Mauritius Project



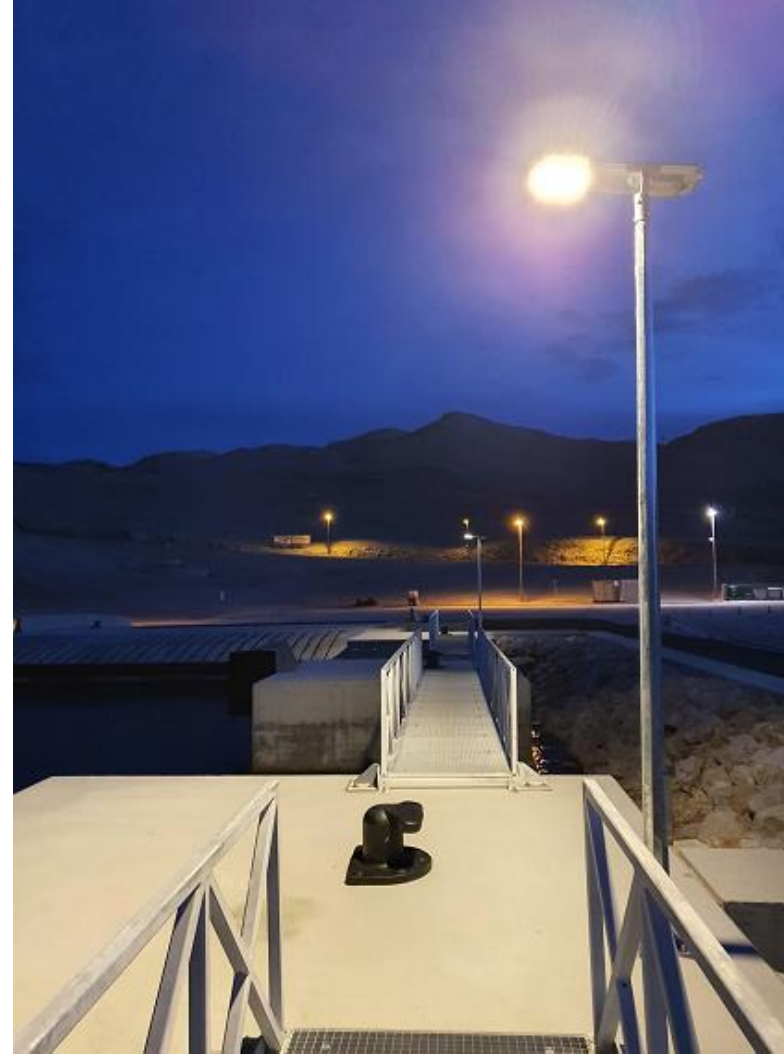
SSL-310M in Tanzania Project



SSL-34M in Sea Side



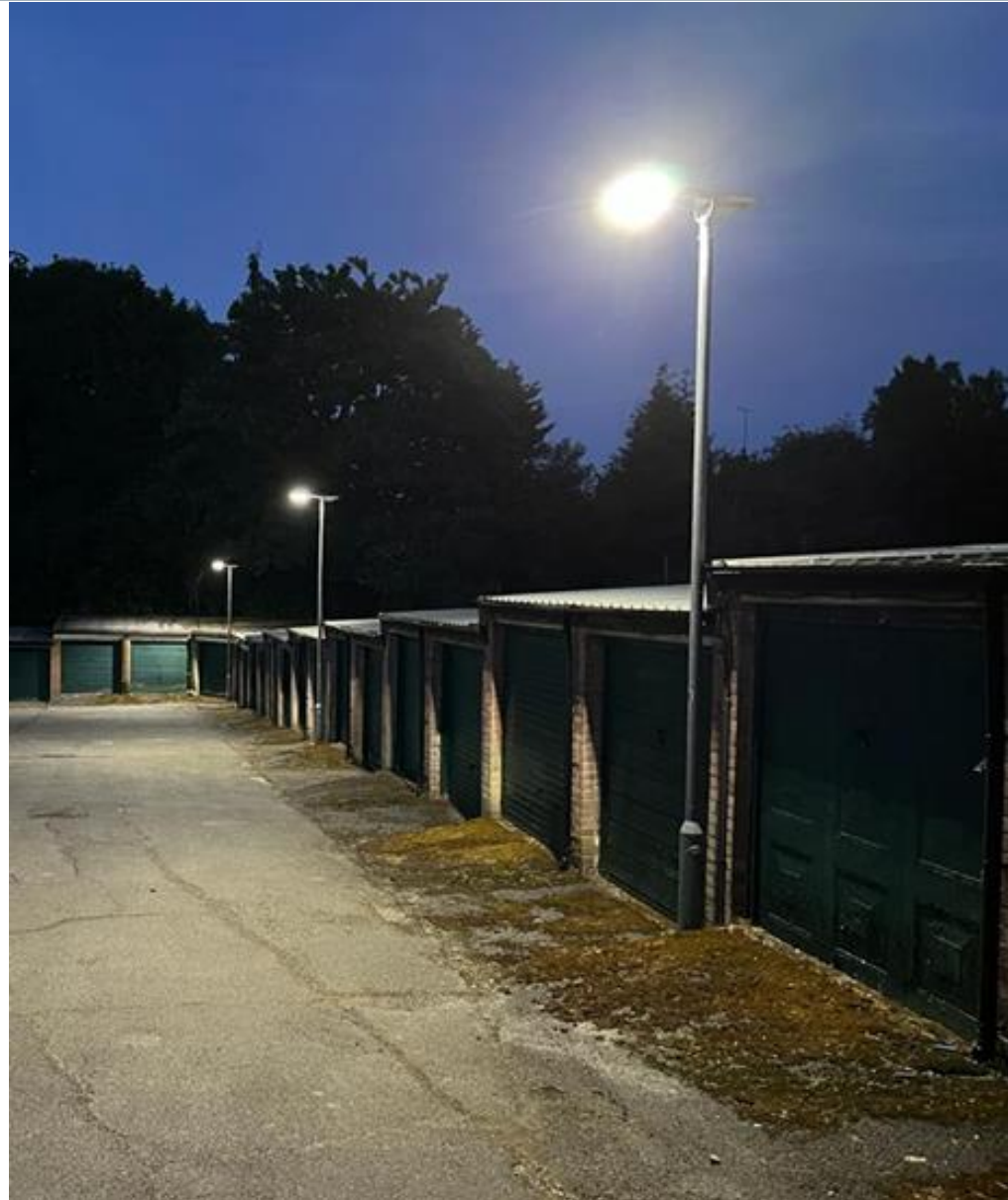
SSL-34M in Croatia Sea Side Project



SSL-38M in Algeria Project



SSL-34M in Spain Community Project



SSL-310M in Chile Project





Theroms



Why we will develop our Thermos Series with Auto-Cleaning Systems?

1. With the accumulation of dust on the surface of the solar panel, and it becomes an insulating layer on the solar panel. So it will affect its heat dissipation.

Studies have shown that the solar panel cell temperature rises by 1°C , and the output power decreases by about 0.5%. In addition, when the solar panel is exposed to sunlight for a long time, the covered part heats up much faster than the uncovered part, resulting in burnt dark spots when the temperature is too high.

This process will aggravate the aging of the battery panel, reduce the output, and cause the components to burn out in severe cases.

2. Dust adheres to the surface of the panel, which will block the light. Some studies have shown that under the same conditions, the output power of clean panel components is at least 5% higher than that of fouling modules.

Difference



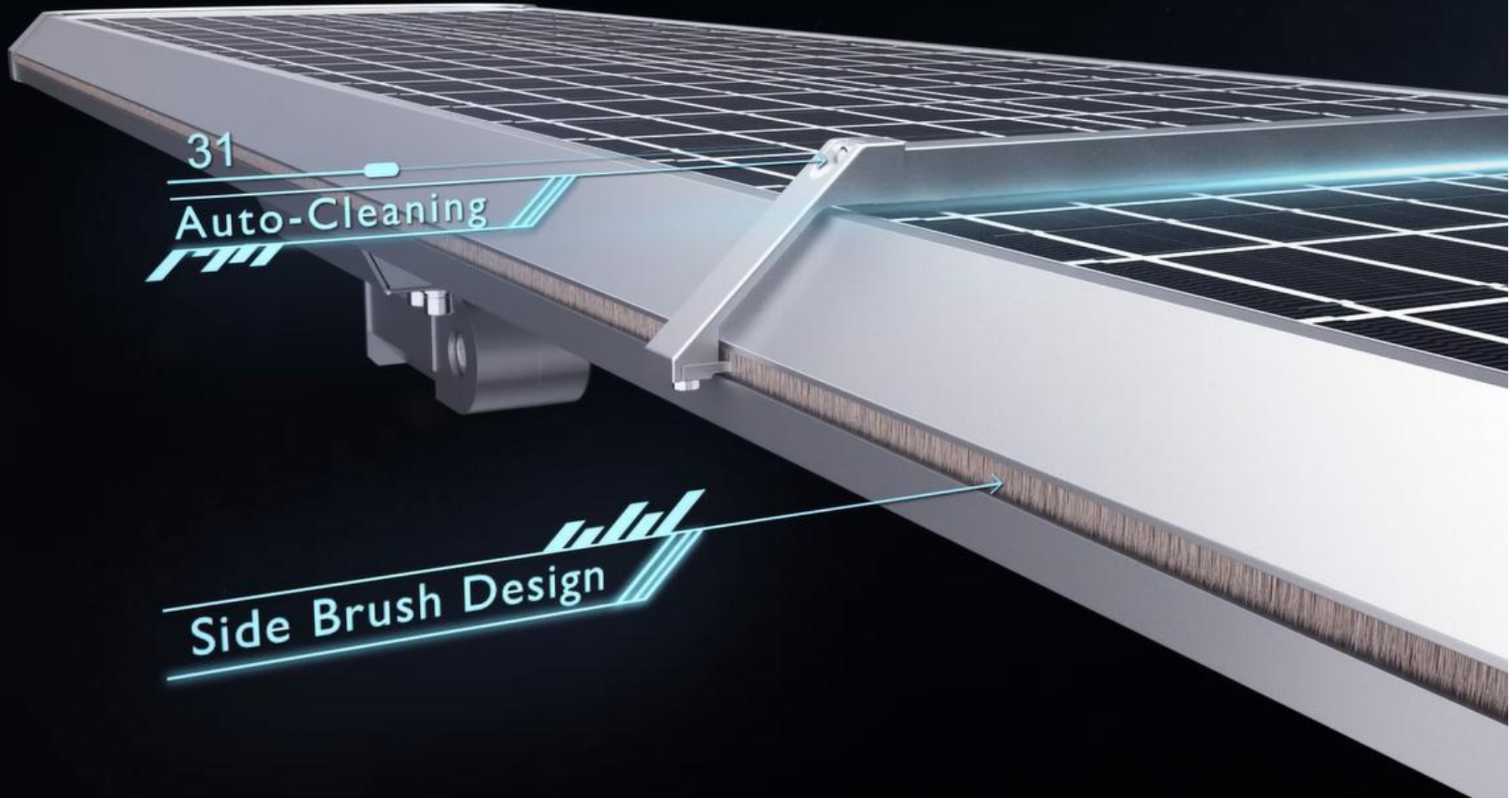
This is a comparison of before and after cleaning the solar panels

Automatic cleaning function



Clean dust automatically on time

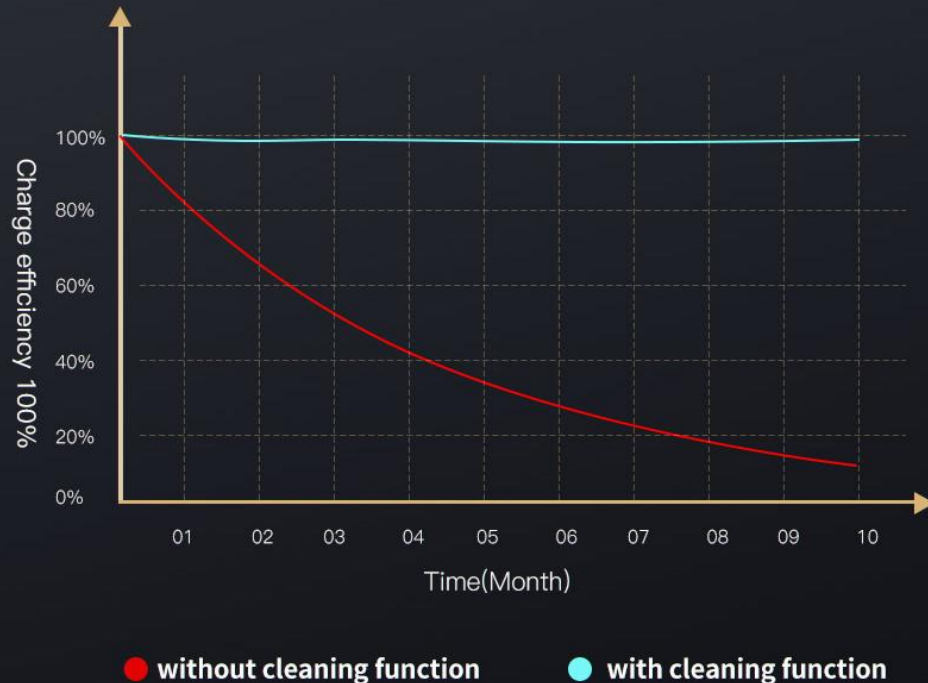
Automatic cleaning function



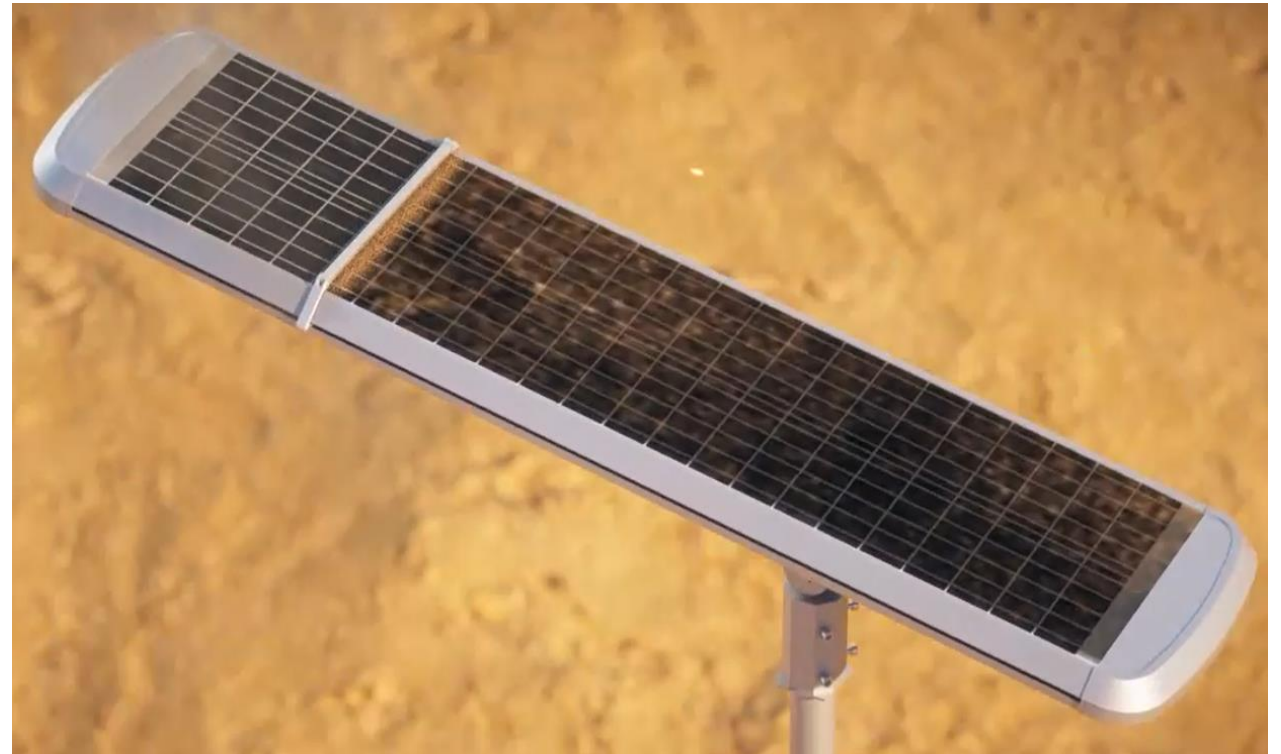
Automatic cleaning function

function of auto-cleaning

clean dust and snow
automatically on time, don't need
labor maintainance



cleans the solar panel automatically 3 round trips in the morning, then 1 round trip every 6 hours to keep the solar panel clean and with high charging efficiency, especially in snowy or dusty days.



Intelligent fault alarm

4 indicator light function

When the lamps work with wrong,FAS check the broken spare part automatically and alarm,which can solve the problem in high efficiency and reduce the after maintain cost.



1. When the lamp works normally, it represents the battery power display:

a lit indicator means 30% battery power;

Two illuminated indicators mean 60% battery power;

three illuminated indicators mean 80% battery power;

and four illuminated indicators mean 100% battery power.

2. When the lamp does not work, it represents an error display:

LED1 indicator flashes, it means the battery is defective;

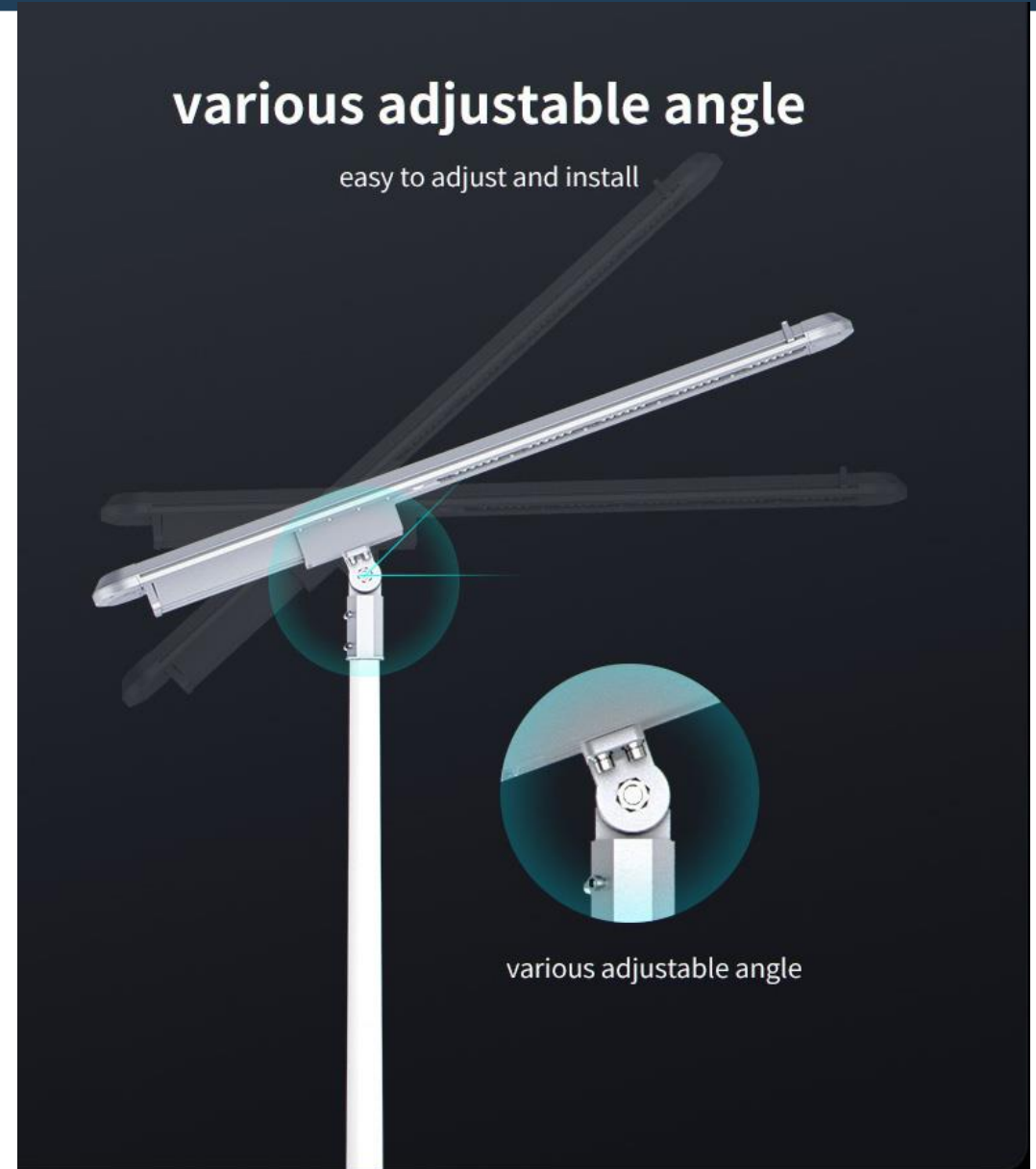
LED2 indicator flashes, it means the solar panel is faulty;

LED3 indicator flashes, it means the LED module has an error;

LED4 indicator flashes, it means the unit power supply (PCBA) is defective;

LED1 and LED4 indicators flash at the same time, it is a fault of the dust wiping function.

Multiple installation ways



For vertical Installation

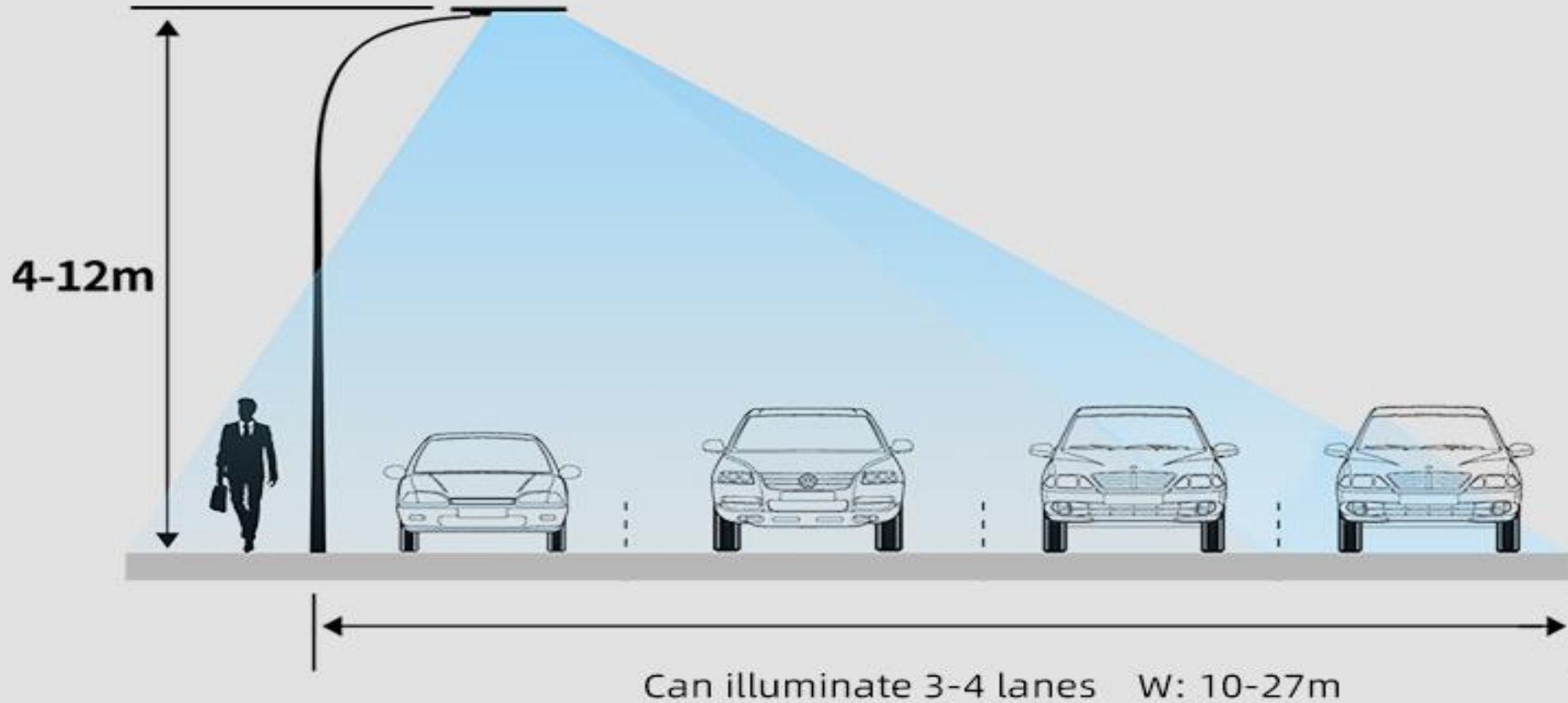


For horizontal Installation

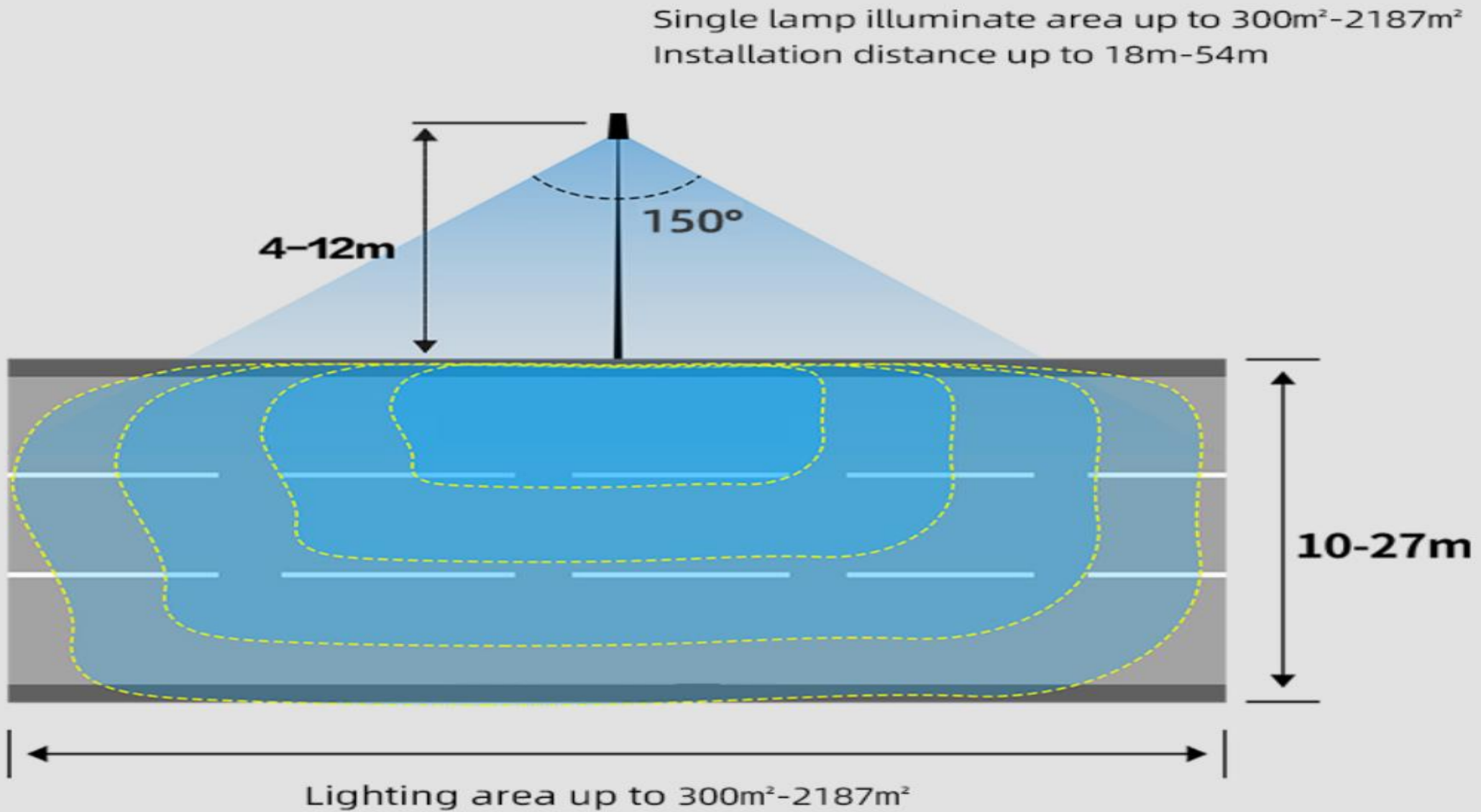


Wide Lighting Areas

Installation height up to 4m-12m
Can illuminate 3-4 lanes



Wide Lighting Areas



Production



SSL-76 in Israel Parking Lot Project



SSL-76 in Israel Parking Lot Project



SSL-76 6000pcs in Philliepine Government Project



SSL-74 9M Tall in Mauritius Smart City Project



SSL-74 9M Tall 30M distance 124PCS 9500 LM in Mauritius Project



SSL-75 in Slovakia Project



SSL-72 in Hungary Basketball Court Project



Thermos in Thailand Projects



SSL-72 in Mexico Projects





Solar Landscape Light

Cyprus Projects with SLL-31



Singapore&UAE Projects with SLL-31



Italy Project with SLL-31



Vietnam Project with SLL-10



Malaysia Project with SLL-12N1



Malaysia Project with SLL-12N1



New Alpha Solar Area Light



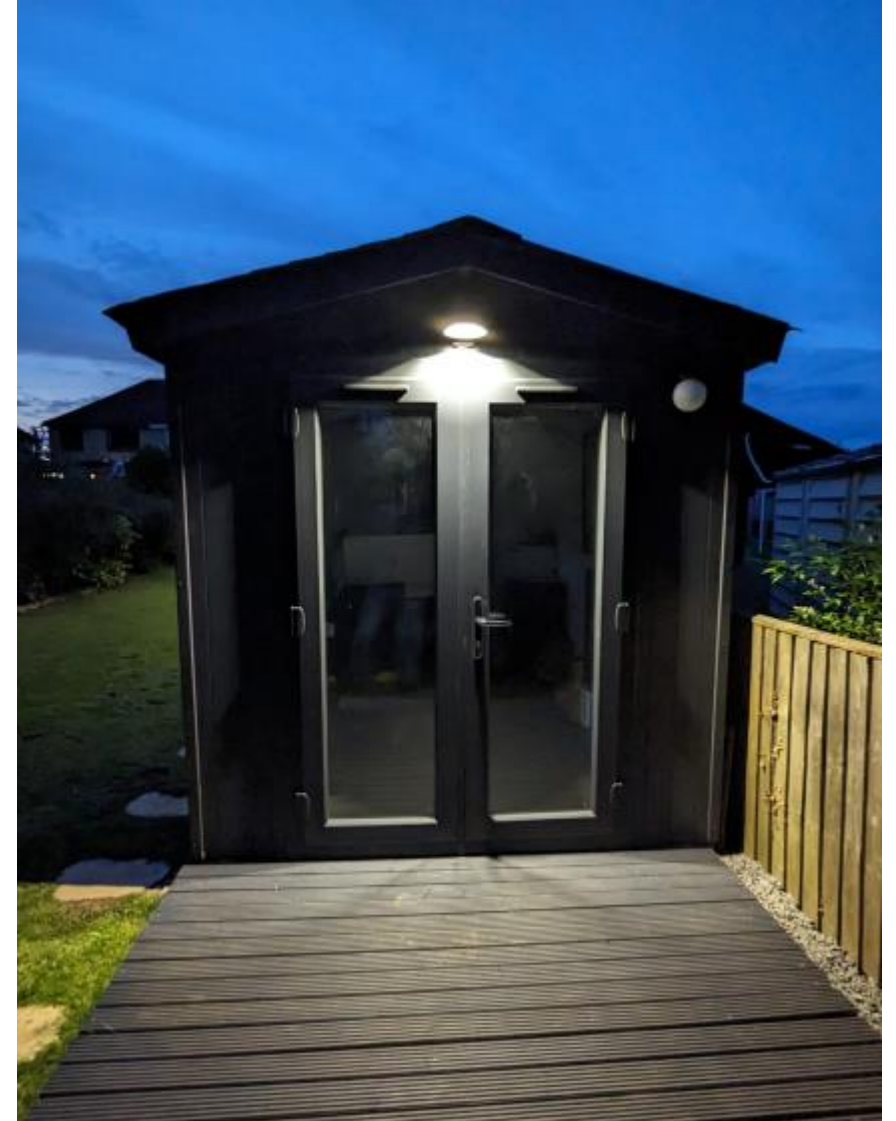


Solar Wall Light

SWL-32 SWL-33



SWL-28



SWL-26



SWL-24



SWL-20pro&40pro



SWL-12



SWL-11



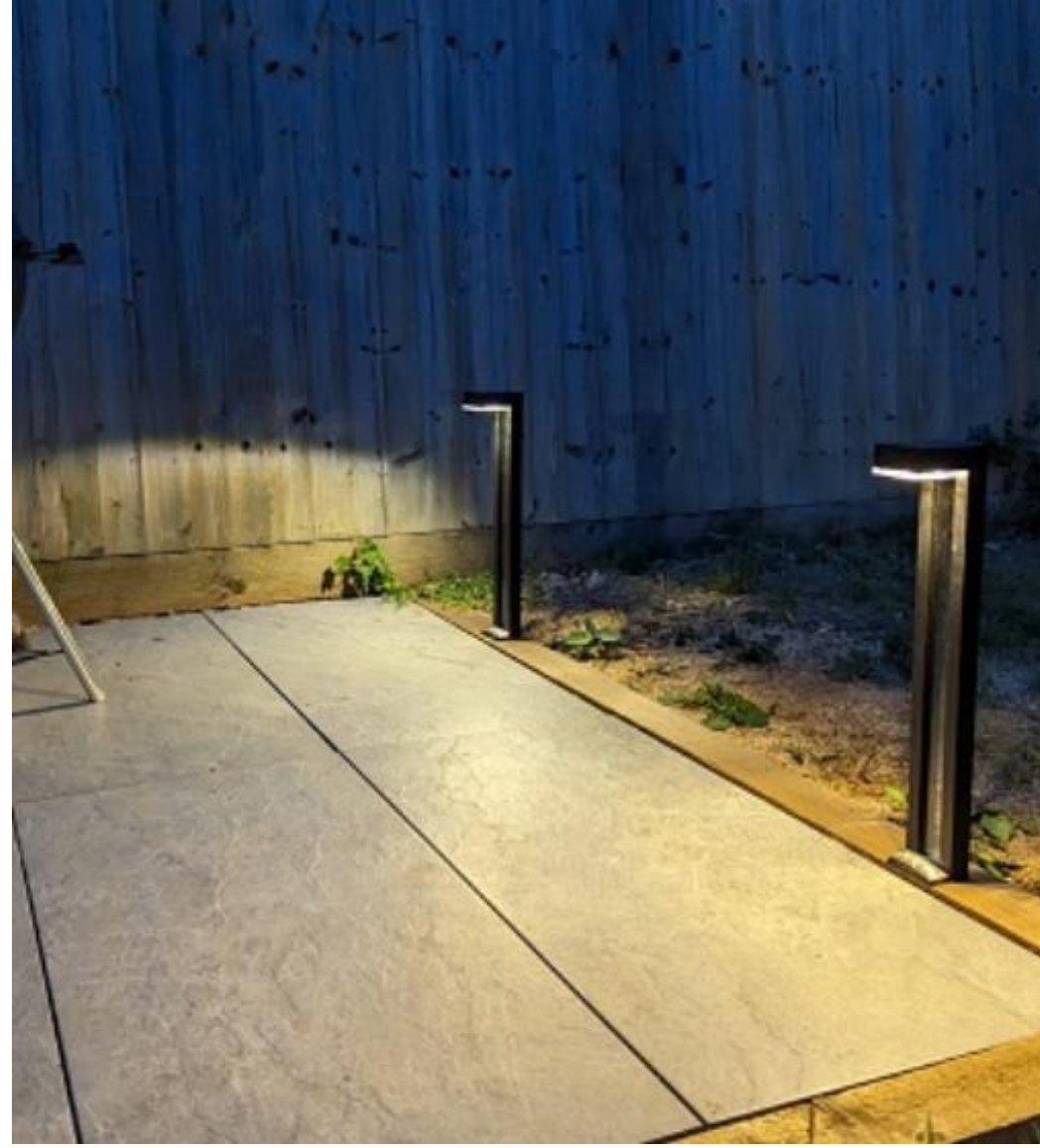
SWL-10W & SGL-10S & SGL-10L



SGL-12



SGL-07Max



ESL-83



ESL-15Pro





Thanks